

# New! HB SERIES SNAP-IN ROCKER SWITCHES

## FEATURES

- Soft light or standard illuminated and non-illuminated models.
- Single pole maintained action models with splash protection per IP42.
- Actuator and case color selections.
- Standard actuator marking options with optional visible (visi) rocker 'ON' indication.

## SPECIFICATIONS

<b>Contact ratings:</b>	20A 125VAC or 16A 250VAC (UL/CSA) 3/4 HP 125VAC or 250VAC (UL/CSA) 6A 125VL (UL) 16(4)A 250VAC~ μT85 (VDE, SEMCO, DEMCO, NEMCO, FEMKO, SEV)
<b>Initial contact resistance:</b>	20 milliohms max.
<b>Insulation resistance:</b>	100 megohms min. at 500 V
<b>Dielectric strength:</b>	1000 VAC for 1 minute
<b>Electrical life:</b>	10,000 cycles at full load
<b>Operating temperature range:</b>	-20°C to 85°C

## MATERIALS

<b>Contacts:</b>	Silver cadmium alloy	<b>Lamps:</b>	Neon or fluorescent.
<b>Terminals:</b>	Silver plated copper		
<b>Actuator:</b>	Nylon, type 66 or PC (UL94V-2 min.)		
<b>Case:</b>	Nylon, type 66 (UL94V-2 min.)		

## AGENCY RECOGNITION



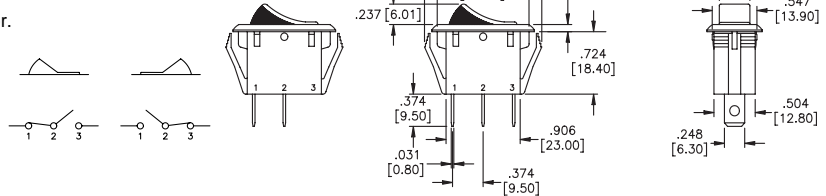
UL, CSA, VDE, SEMKO, NEMKO, DEMKO, FEMKO, & SEV. Models are supplied with agency markings.

## Quick connect terminals - non-illuminated - with visi rocker



MODEL NO.	CIRCUIT
HB110C2NBBRW	ON OFF
HB120C2NBBRW	ON ON
HB130C2NBBRW	ON OFF ON

Above models have black actuator.



Max. panel thickness: .083 [2.10]

SPECIFICATIONS SUBJECT TO CHANGE WITHOUT NOTICE

N

# New! HB SERIES SNAP-IN ROCKER SWITCHES

N

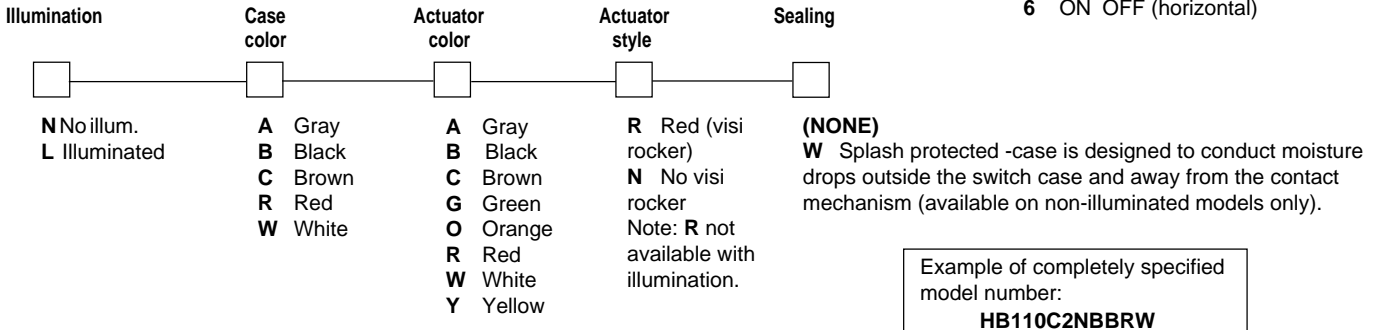
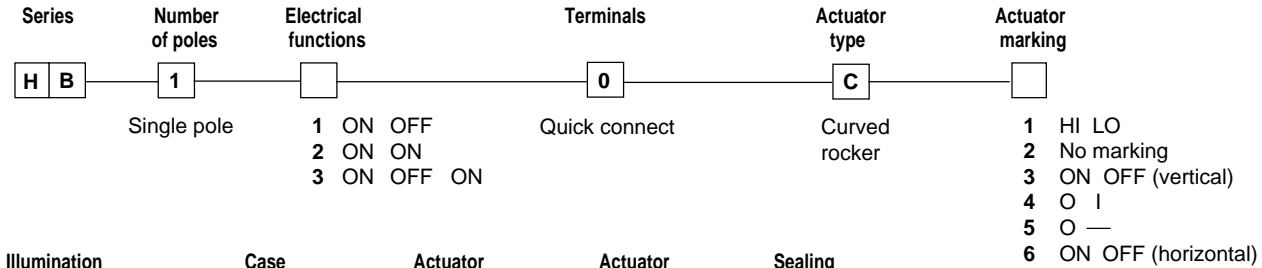
**Additional ordering information:** Commonly ordered models are shown above with complete model numbers and specifications. Below is an order format that enables you to 'build your own switch' and specify the correct switch model number by simply selecting from all available options shown and filling in the boxes.

## 'BUILD YOUR OWN SWITCH' ORDER FORMAT

Fill in boxes with selections shown for complete model number.

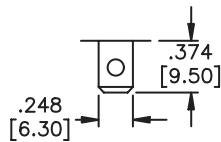
Allowable options are shown below each respective box.

Note 'NONE' indicates box may be left empty.

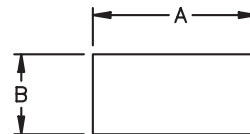


### TERMINALS

#### QUICK-CONNECT



### PANEL CUT-OUTS



pnl. tk'ness.	A +0, -.004	B +0, -.004
.029-.049"	1.126"	.539"
.050-.078"	1.134"	.539"
.079-.118"	1.150"	.539"

SPECIFICATIONS SUBJECT TO CHANGE WITHOUT NOTICE